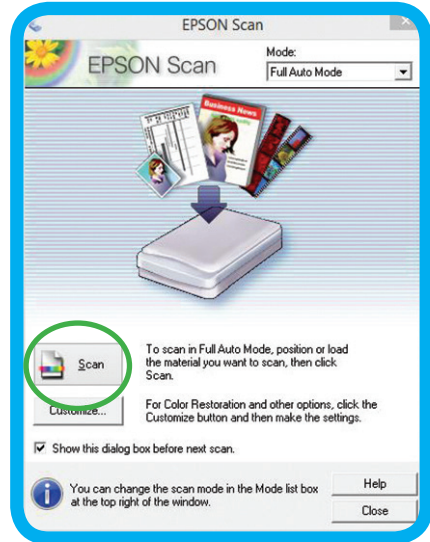


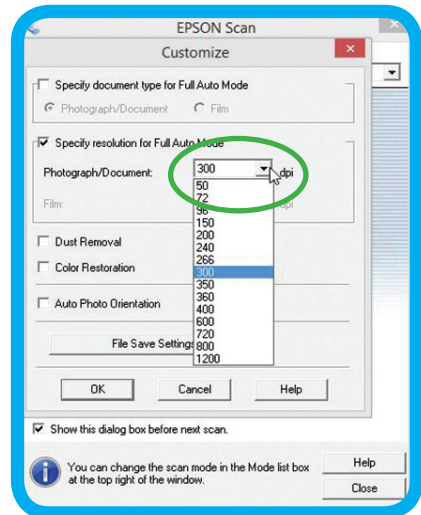
SCANNING AN IMAGE USING EPSON SCAN SOFTWARE

Full Auto Mode

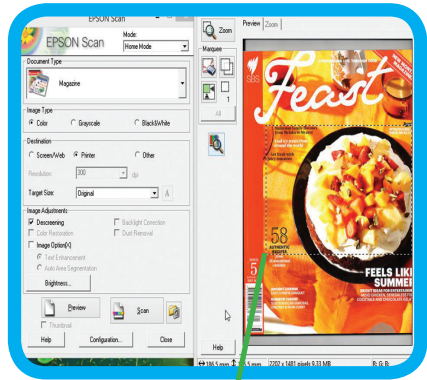
1 From the computer's start menu select the EPSON Scan software. This will initiate the program and you will be presented with a simplified screen with very few options. Select "Scan" and the scanner will automatically detect your image, scan it and save it for you. This method is excellent for someone who wants to scan an image quickly and easily.



2 Within this mode you have the option to customise your scan by specifying the resolution of the scan, removing dust, colour restoration and Auto Photo Orientation and you can specify where you want the scan to be saved. After you have chosen your required options select "OK" where the initial window will reappear and select "scan". This mode doesn't give the user a lot of scope to customise their scan.

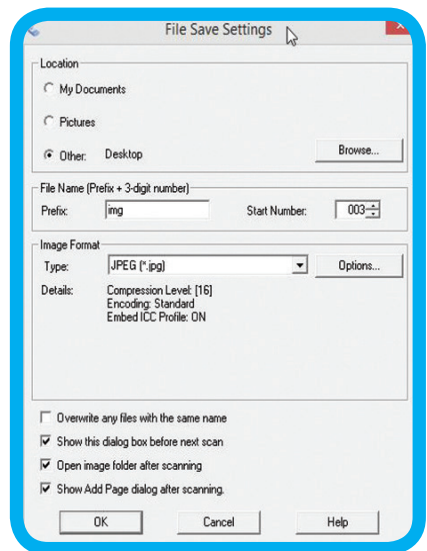


5 The user clicks “Preview” in order to proceed with the scan. Once the scan has previewed the user can then choose to isolate a selection of the previewed scan by clicking the mouse and drawing a box over their chosen area. The user can now select the “Scan” button.



Scan Selection

6 Once “Scan” has been selected the “File Save Settings” box appears. In this box the user can choose the location where they wish to save their scan and they can also choose the image format i.e. JPEG, BITMAP, PDF etc. There is an option box that allows you to customise the image quality if the user chooses. When the user is satisfied with their selections, choose “OK” and the image will start to scan.



7 A progress box will appear informing the user of approximately how long the scan will take to scan. This depends on the dpi chosen. The higher the dpi, the longer the scan will take. The document type mode chosen by the user will also affect the length of time that it takes for the image to scan. The scan will be saved to the location chosen by the user. The scanned selection that was chosen earlier is represented in the final image below.

